

For swing gates with leafs up to 7 m.

Electromechanical gearmotor for external assembly powered at 24 Vdc with magnetic encoder. TO7024 is the ideal solution for industrial installations destined for intensive use. New functional design and exclusive style.

New third generation model:

the first for leafs up to 7 m, ideal for industrial use.

Quality and durability thanks to the housing, made up of two tough aluminium shells with polyester paint finish; more resistant to atmospheric agents.

Internal moving parts completely in steel, light alloys and technopolymers.

Extremely simple installation and maintenance.

Reliable and silent: patented layout of internal parts.

Bronze lead screw for safe closure.

Generously sized and practical connection compartment:

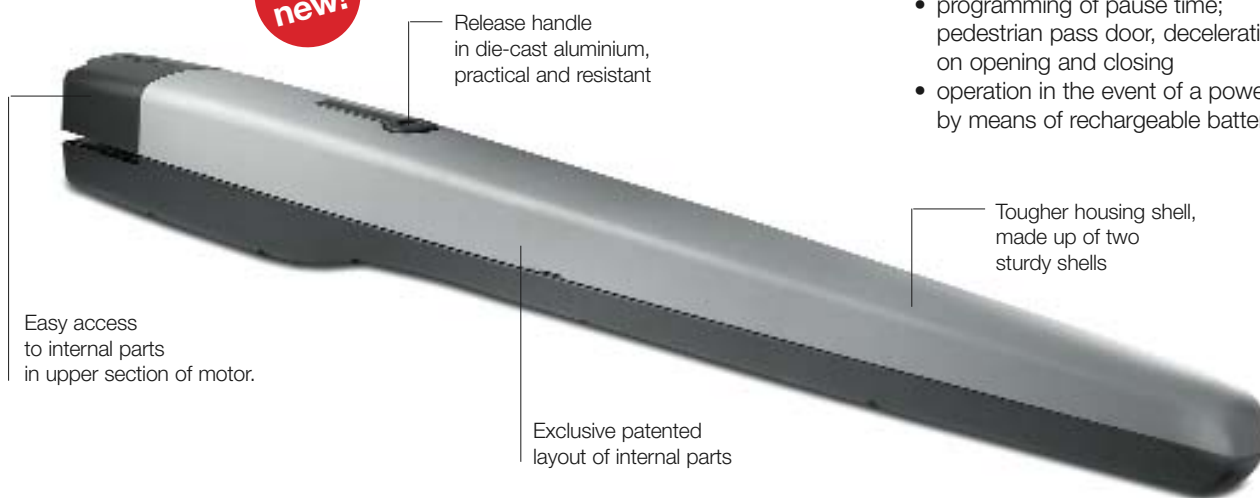
rapid and easy access from above to internal parts located in the upper section of the motor.

Control unit Mindy A824T for TO7024.

24 Vdc version with magnetic encoder, perfect for intensive use:

- simple programming of functions, by means of a single key
- clutch with anti-crush safety mechanism
- memorisation of limit positions on opening and closing in self-learning mode
- programming of pause time; pedestrian pass door, deceleration on opening and closing
- operation in the event of a power failure by means of rechargeable batteries

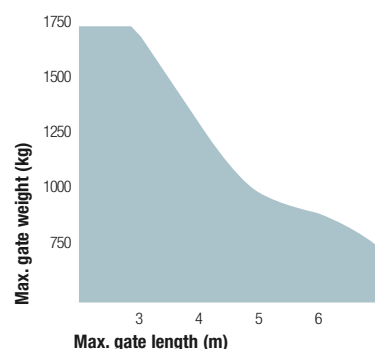
100% new!



Code	Description	Pack/pallet
TO7024	irreversible, 24 Vdc, with magnetic encoder, mechanical stop in opening and closing	20

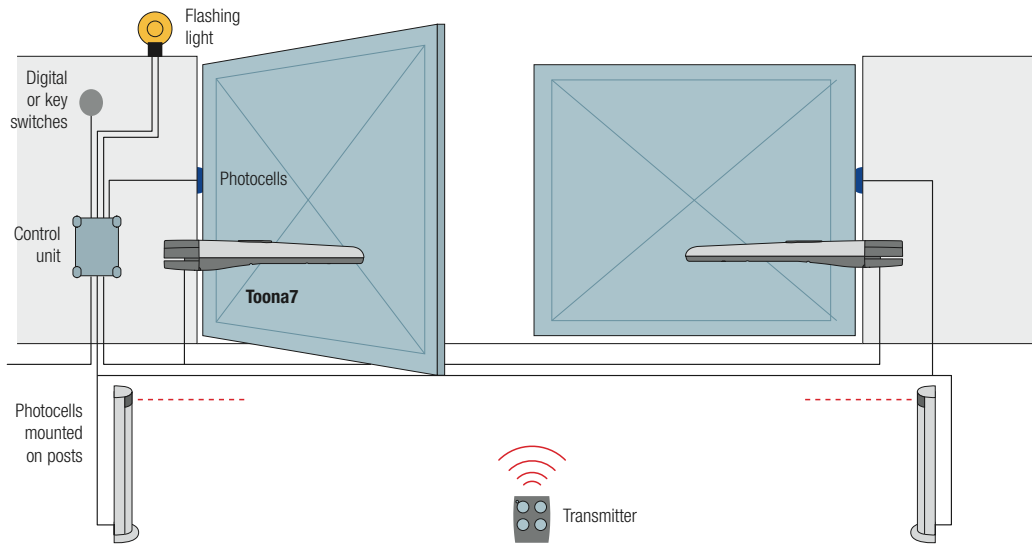
Technical specifications		TO7024
Power	(Vac 50 Hz)	-
	(Vdc)	24
Max. absorption	(A)	5
Nominal absorption	(A)	2.5
Max. absorbed power	(W)	120
Nominal absorbed power	(W)	60
Built-in capacitor	(µF)	-
Protection level	(IP)	44
Speed under no load	(m/s)	0.013
Speed under load	(m/s)	0.011
Travel	(mm)	584
Max. force	(N)	2700
Nominal force	(N)	1400
Working temp.	(°C Min/Max)	-20 ÷ +50
Thermal cut-out	(°C)	-
Work cycle	(cycle/hour)	30
Insulation class		F
Dimensions	(mm)	1200x128x150 h
Weight	(kg)	15

Utilisation limits



The shape, the height of the gate and the weather conditions can considerably reduce the values shown in the graph to the side.

Nice Toona7



Accessories



PLA10
vertical 12 V electric lock
(required for gates longer than 3 m)

Pc./pack 1



PLA11
horizontal 12 V electric lock
(required for gates longer than 3 m)

Pc./pack 1



TS
signboard

Pc./pack 1



CARICA
plug-in card
for battery charger

Pc./pack 1



B12-B
12 V 6 Ah batteries

Pc./pack 1



B12V-C
12 V 2 Ah batteries

Pc./pack 1



BA3-A
Nice box for batteries

Approximate draft

The information shown in this publication is purely indicative. Nice reserves the right to make any modifications to the products as it sees fit.